

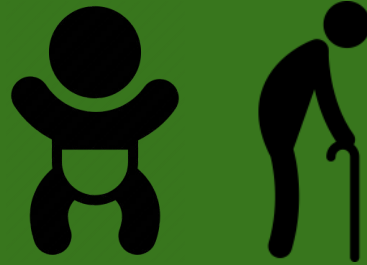
PCHC:
Elders Climate Action MA

Nathan Hawley & Valerie Zhu

Population of Focus

Who is most severely affected by climate change?

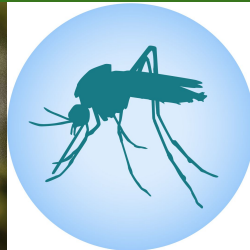
- Very young & very old individuals
- Communities of color
- Immigrant groups (particularly with low English proficiency)
- Indigenous peoples
- Persons with preexisting medical conditions or disabilities
- Outdoor laborers



Population of Focus

What are the negative health trends driven by climate change?

- Air pollution → lung disease
- Water pollution → foodborne & diarrheal disease
- Increased pollen season → allergies & asthma
- Altered insect distribution → vector-borne illnesses
- Extreme weather → food insecurity, home insecurity, heat stroke
- Natural disasters → trauma, stress, mood-related disorders



Interprofessional Teams

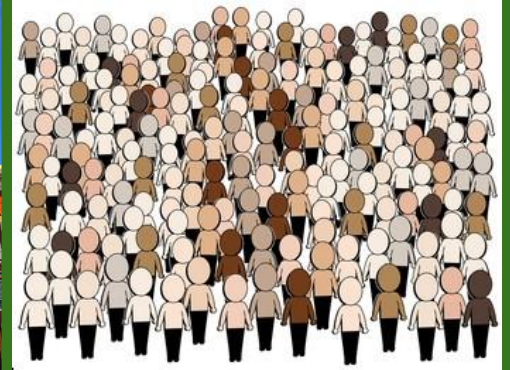
Legislators

General population

Advocacy groups

Local sustainability groups

Healthcare workers



Population Health Advocacy: Strategies & Opportunities

Interviews

- UMMS Energy & Sustainability Initiative
- League of Women Voters
- Environmental League of MA
- Medical Students for a Sustainable Future




Service

ECA MA Questionnaire

- Local advocacy
- State-level advocacy
- ECA engagement
- Barriers to engagement
- Priority climate concerns
- Health-related climate concerns

Elders Climate Action MA Questionnaire

 Draft restored

In which city or town and state do you live?

Your answer

Are you an active member of any other statewide and/or national climate organizations?

I am an active member of another climate organization.

I am a member of another climate organization, but I am not active.

I am not a member of another climate organization.

If you are a member of another climate organization, what is/are the name of the organization(s)?

Your answer

If you are a member of any organization that would be interested in inviting a speaker from ECA, what is/are the name of the organization(s)?

Experiential Learning

Mothers Out Front

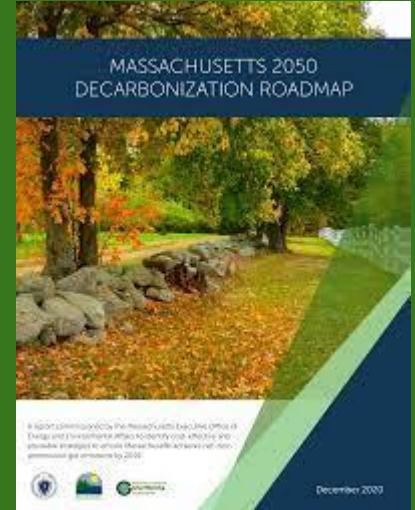
ECA Legislative Team

ECA Leadership Team

Deep Dialogue: Biodiversity

MA Roadmap Coalition

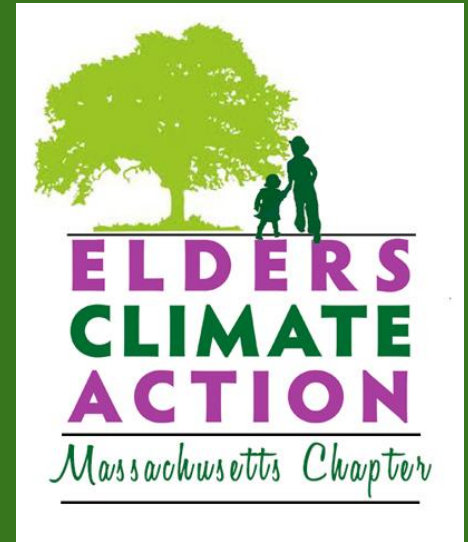
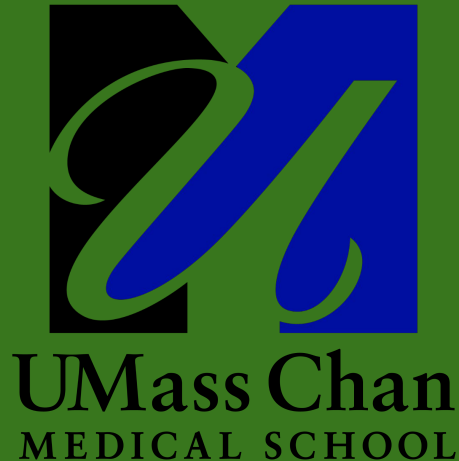
**MOTHERS
OUT
FRONT**



Acknowledgements

We'd like to thank the ECA MA team, with special thanks to:

- Tina Grosowsky
- Roger Luckmann
- Casey Bowers
- Emily Gentile
- Michelle Smith
- Launa Zimmaro



Resources

- www.ecamass.org
- www.ecamass.org/eca-mass-legislative-priorities
- www.climate.nasa.gov
- www.cdc.gov/climateandhealth/effects
- www.health2016.globalchange.gov/populations-concern
- www.mass.gov/doc/ma-2050-decarbonization-roadmap/download
- www.umassmed.edu/growinggreen/newsletter/climate-action-plan-2021-2026
- www.lwvma.org
- www.environmentalleague.org
- www.ms4sf.org

Thank you!

Any questions?