

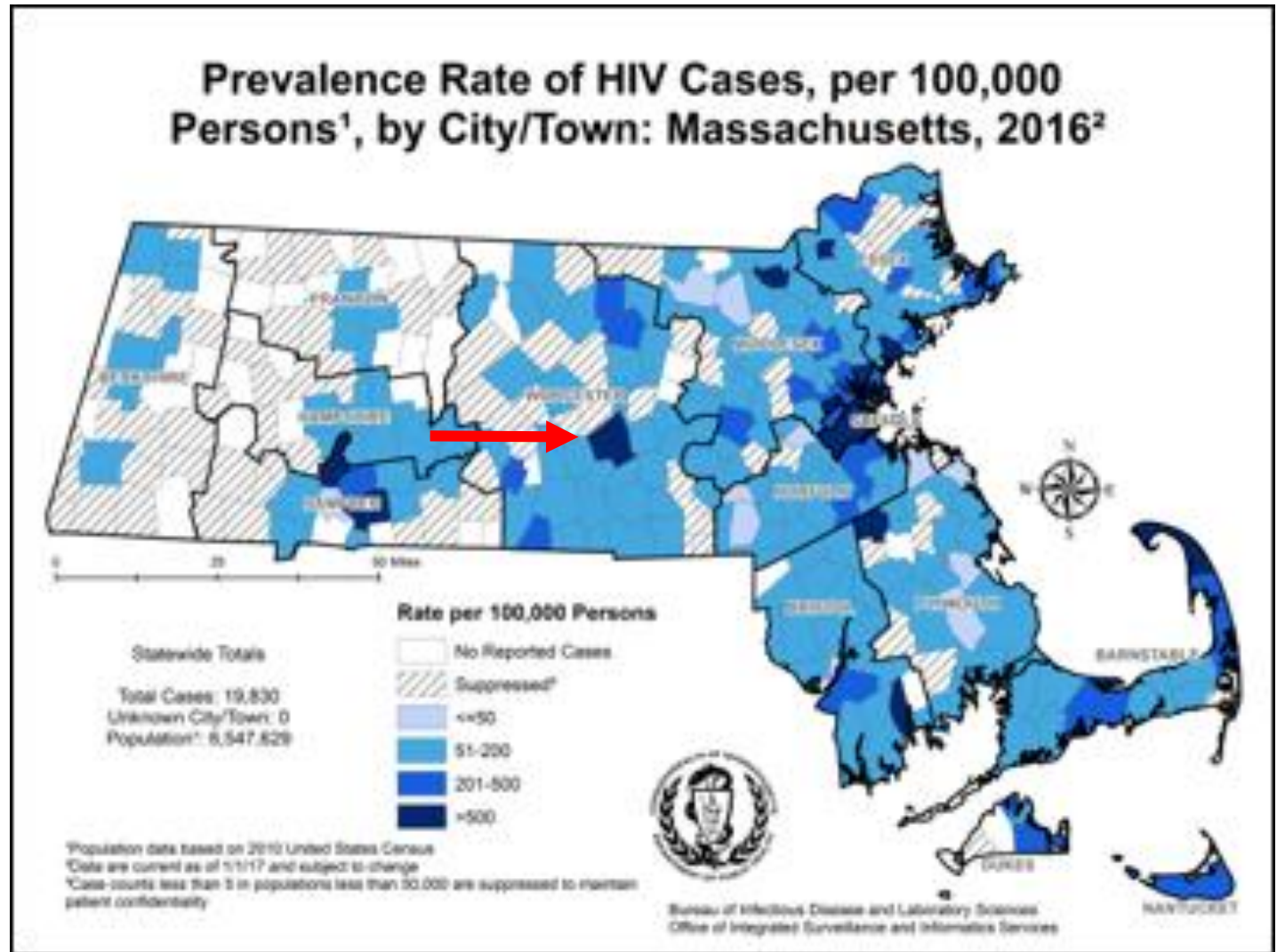
Anushay Mistry,  
Brittany Rosenthal,  
Ethan Loew, &  
Stephanie Trimboli

Population Health  
Clerkship 2019

# HIV in Massachusetts: A state's action plan and two community responses

# Geographic Distribution of HIV/AIDS Prevalence: Massachusetts 2016

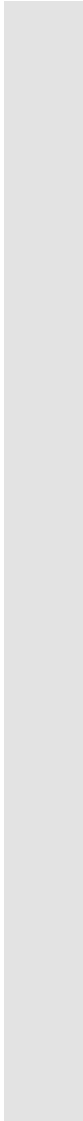
Commonwealth of Massachusetts  
Department of Public Health



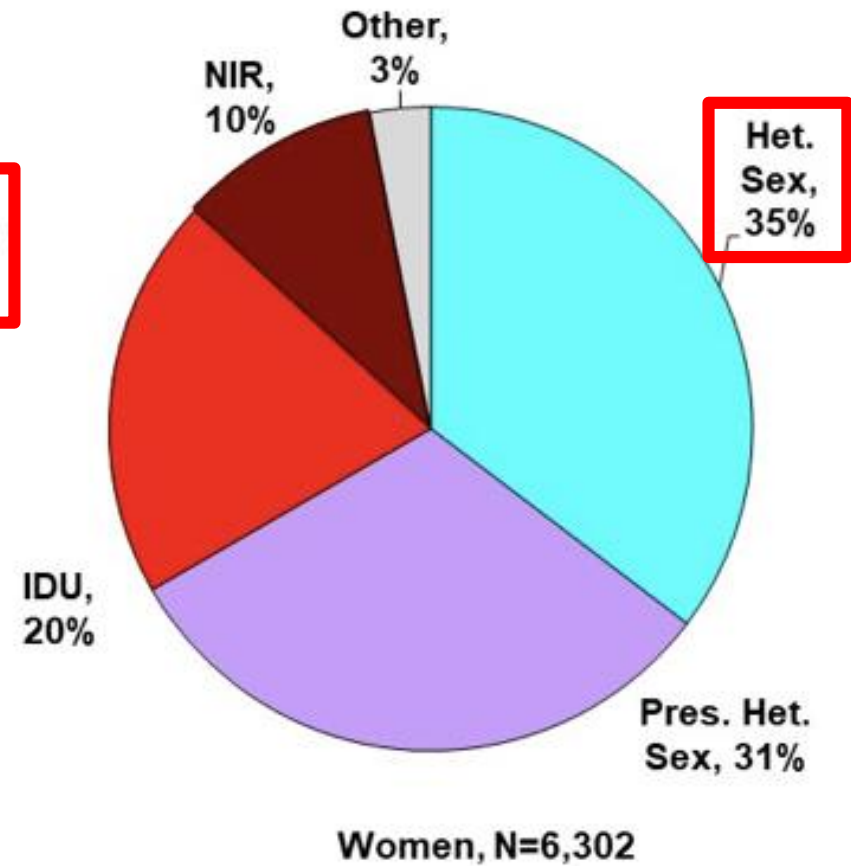
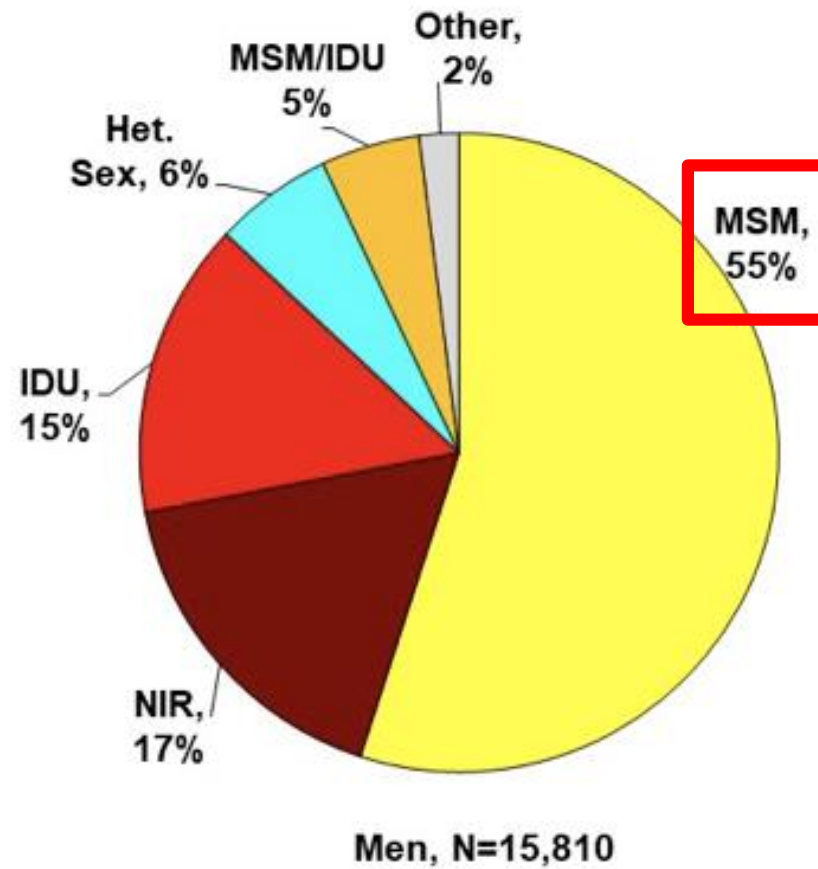


# Who is living with HIV in Massachusetts?

Data from MPDH Bureau of Infectious Disease and  
Laboratory Sciences (as of 1/1/2018)

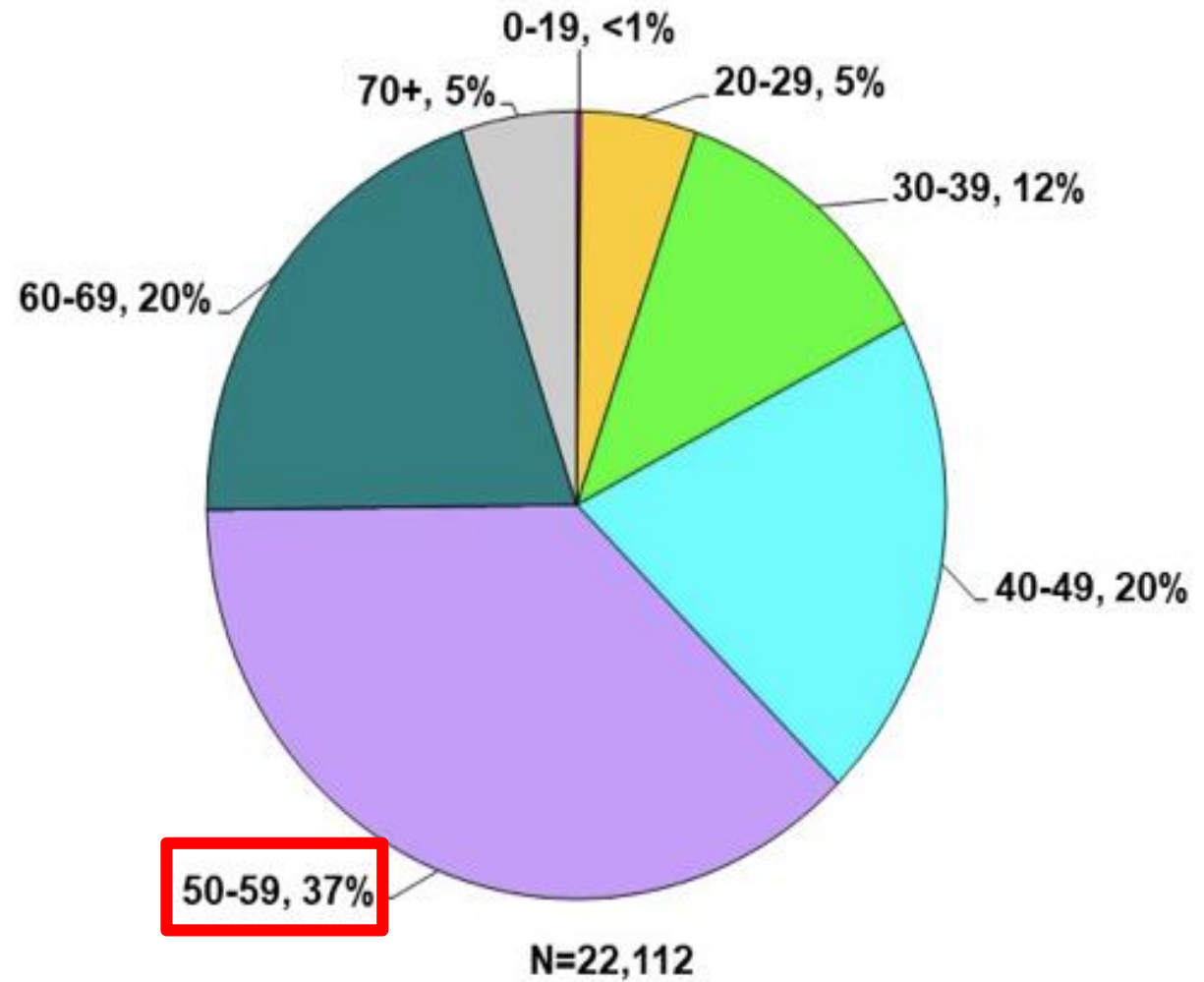


# Percentage Distribution by Gender & Exposure Mode



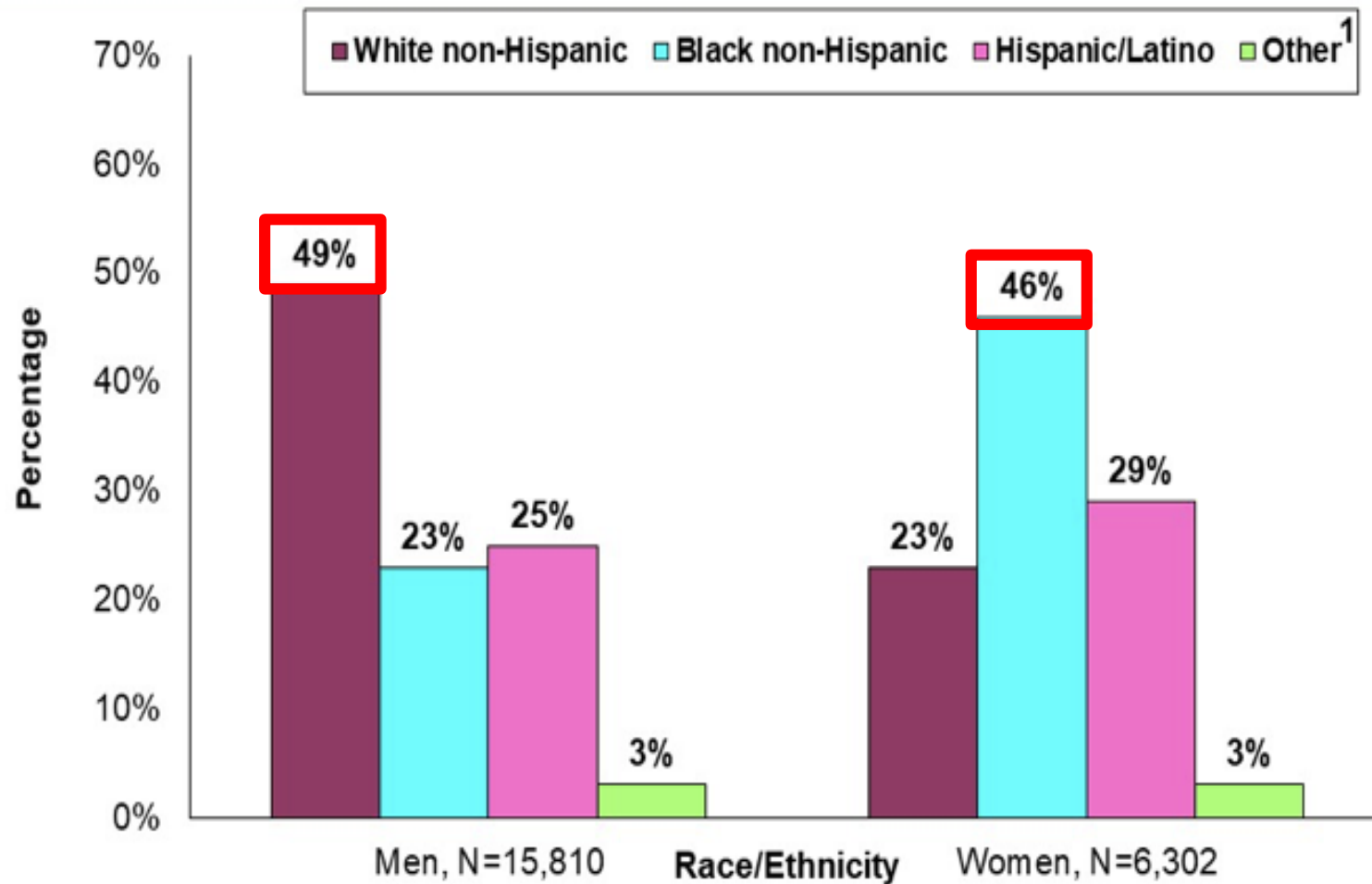
MSM=Male-to-Male Sex, IDU=Injection Drug Use, Pres.=Presumed, Het. Sex=Heterosexual Sex, NIR.=No Identified Risk  
Data Source: MDPH Bureau of Infectious Disease and Laboratory Sciences, Data as of 1/1/18

# Percentage Distribution by Age



Data Source: MDPH Bureau of Infectious Disease and Laboratory Sciences, Data as of 1/1/18

# Percentage Distribution of Race & Ethnicity by Gender



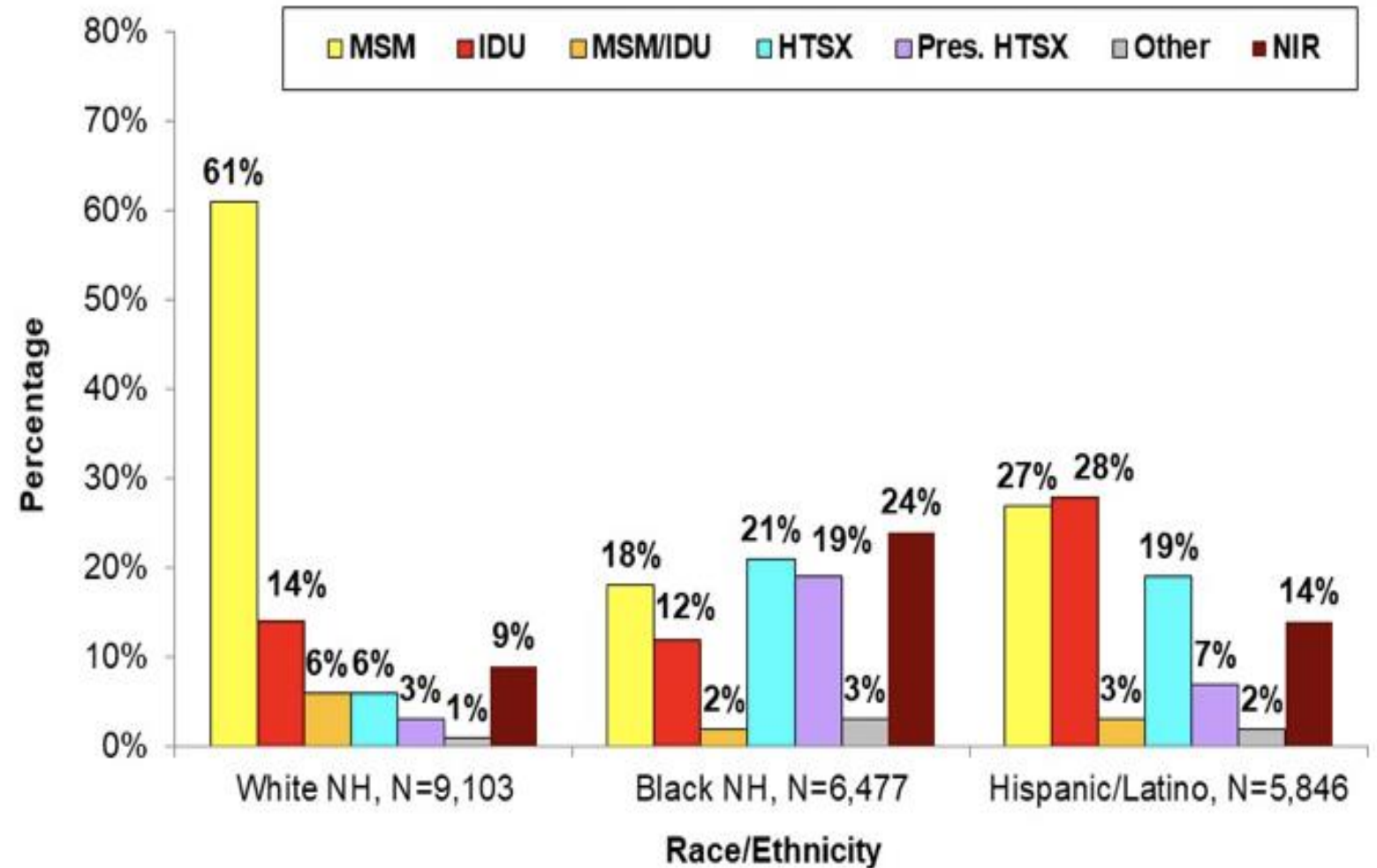
<sup>1</sup> Other include Asian/Pacific Islander and American Indian/Alaska Native

Data Source: MDPH Bureau of Infectious Disease and Laboratory Sciences, Data as of 1/1/18

# How were those living with HIV/AIDS infected?

Data from MPDH Bureau of Infectious Disease  
and Laboratory Sciences (as of 1/1/2018)

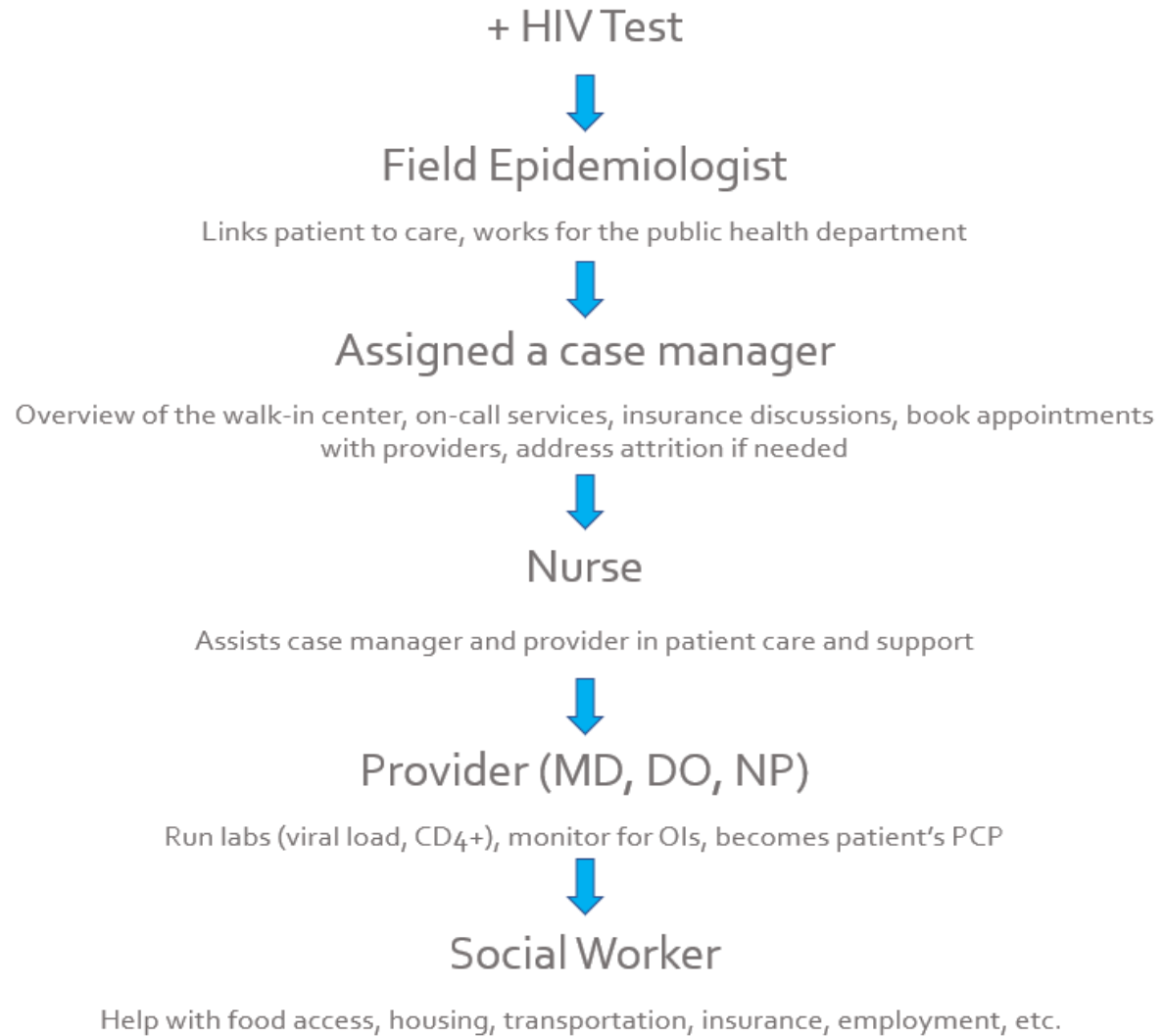
# Percentage Distribution of Exposure Method in Race & Ethnicity



MSM=Male-to-Male Sex, IDU=Injection Drug Use, Pres.=Presumed, Het. Sex=Heterosexual Sex, NIR.=No Identified Risk, NH= Non-Hispanic, Data Source: MDPH Bureau of Infectious Disease and Laboratory Sciences, Data as of 1/1/18



# Interprofessional teams



*Everyone is working together to give holistic, comprehensive care*

A teal-colored starburst shape with multiple sharp points, centered on a white background. Inside the starburst, the text "U=U" is written in a white, bold, sans-serif font.

**U=U**

# Population Health Advocacy: Strategies and Opportunities

## Family Health Center Worcester

- PrEP
- Testing/Screening (HIV, HCV, STIs)
- ARCH outreach program

## Greater Lawrence Family Health Center

- PrEP
- Testing/Screening (HIV, HCV, STIs)
- Safe Syringe Program
- Mobile Clinic



U=U

# Population Health Advocacy: Strategies and Opportunities

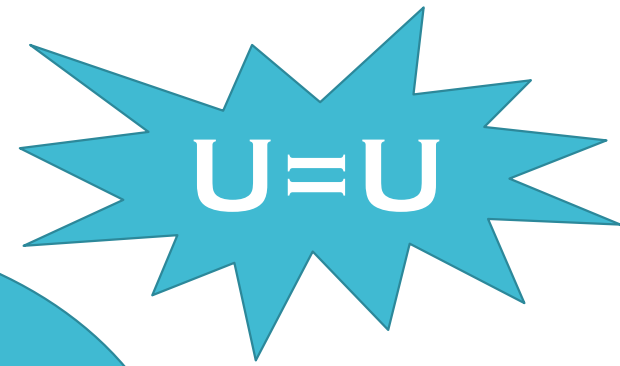
## AIDS Project Worcester

- PrEP
- Testing/ screening, treatment counseling
- Safe Syringe Program
- Addressing social constraints:
  - Food access
  - Housing
  - Transportation
- Mental health
  - Peer support
  - Support groups
- Community Outreach

U=U



# Population Health Advocacy: Strategies and Opportunities



## Project ABLE

- State funding for HIV/AIDS
- HIV service providers, community advocates, people living with HIV/AIDS, state governors and administration



# Assessing the Community Responses to the Massachusetts State Action Plan

## Massachusetts Integrated HIV/AIDS Prevention And Care Plan

Goals of HIV services in the commonwealth: 2017 - 2021 (Office of HIV/AIDS)

1. Reduce the impact of HIV
2. Improve health outcomes for persons living with HIV
3. Reduce persistent HIV-related health disparities

**Goal:** *Considering the community response at the level of the **community health centers**, **hospitals**, and **AIDS Service Organizations (ASO)**.*



# Assessing the Community Responses to the Massachusetts State Action Plan

## Interviews revealed a robust community response

Services directed toward addressing the HIV/AIDS Prevention Care Plan

### 1. Reduce the impact of HIV

- Expansion of PrEP
- HIV, HCV, STI testing
- Syringe service programs (SSPs)
- Community based outreach and linkage
- Overdose education and naloxone distribution
- 100% ART prescription to pregnant women

### 2. Improve health outcomes for persons living with HIV

- Expand interdisciplinary team outreach to newly diagnosed
- Expand HIV testing
- Provide access to HDAP
- Reduce HIV stigma
- Enhanced engagement and retention

### 3. Reduce persistent HIV-related health disparities

- Expand HIV prevention, testing, and medical case management services for black, Hispanic, and transgender populations (ARCH)
- Expand PrEP access for black, Hispanic, and transgender populations
- Administer access to HDAP for black, Hispanic, and transgender populations
- Increase HIV/HCV testing, prevention, and outreach in young people who inject drugs

# Assessing the Community Responses to the Massachusetts State Action Plan

## Improvements and future goals

### 1. Reduce the impact of HIV

- Accessing and sharing data between health centers

### 2. Improve health outcomes for persons living with HIV

- Increase HCV testing , notably in young people who inject drugs
- Offer peer support for persons living with HIV
- Expand housing for persons living with HIV
- Expand services of health centers to minimize patient travel

### 3. Reduce persistent HIV-related health disparities

- Services directed at female HIV+ and at-risk population



# Acknowledgements

Dr. Philip Bolduc

Family Health Center Worcester: Dr. Onabanjo, Ben Alfred, NP

Edward M. Kennedy Health Center: Jose Ramirez, Erika , Dr. Bay, Dr. Sokoloff

Vanessa Sasso with NEAETC

Greater Lawrence Family Health Center: Dr. Bositis, Amy Bositis, Sandra Silva, Anil

Sandy Bertman

AIDS Project Worcester: Carla Whitlow

Dr. Haley

MCPHS

Fenway Health and Project ABLE

Dr. Argenyi

UMass Infectious Diseases Clinic: Dr. Greenough, Dr. Wessołosky

Sandi Carlson

Barry Callis

Dawn Fukuda

